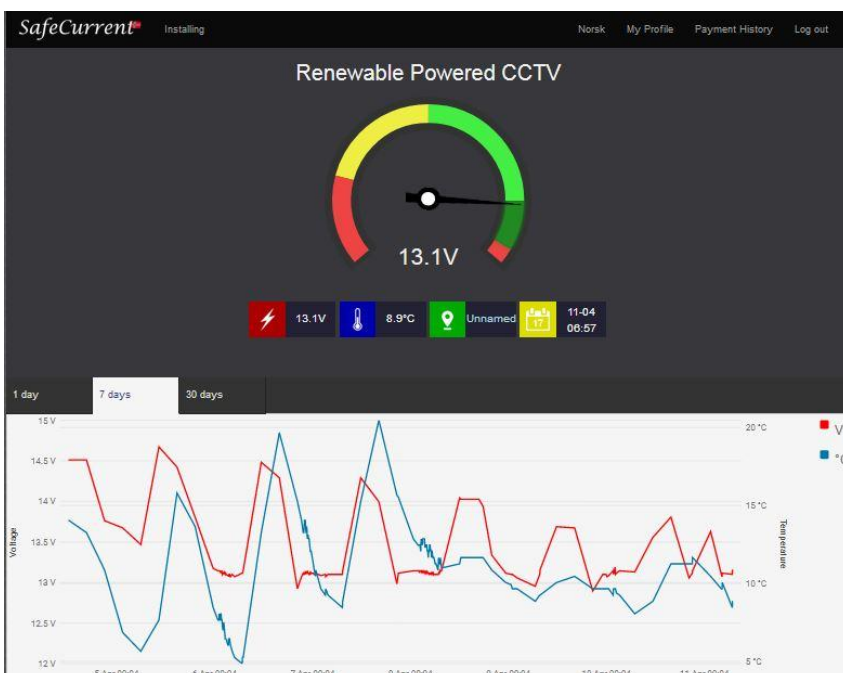


The SafeCurrent enables remote monitoring of your battery voltage, temperature and location of the device based on mobile phone mast triangulation.

- Remotely monitors the battery voltage, temperature and location that can be securely accessed on mobile, PC or tablet which updates every 4 hours.
- Notifications can be sent by email and SMS of user set voltage and temperature values.
- Safecurrent can indicates the device approximate location using mobile phone mast triangulation shown on Google maps accessed on a secure portal.
- Data from several of your devices can be accessed and viewed on one account.
- Extremely simple installation and registration.
- Operates throughout Europe.
- Developed, manufactured and operated securely by a Norwegian company.



SafeCurrent SCMV 10-F1.0	
GPRS module	<ul style="list-style-type: none"> • Quad-band 850/900/1800/1900MHz • GPRS multi-slot class 12/10 • GPRS mobile station class B • Compliant to GSM phase 2/2+ - Class 4 (2 W @ 850/900MHz) - Class 1 (1 W @ 1800/1900MHz)
Terminals	6.3mm Ring Terminals
	SMA Female Contact
Power consumption	0.09mA
	350mA
Voltage	7VDC
	30VDC
Submission	4 times
IP Class	44